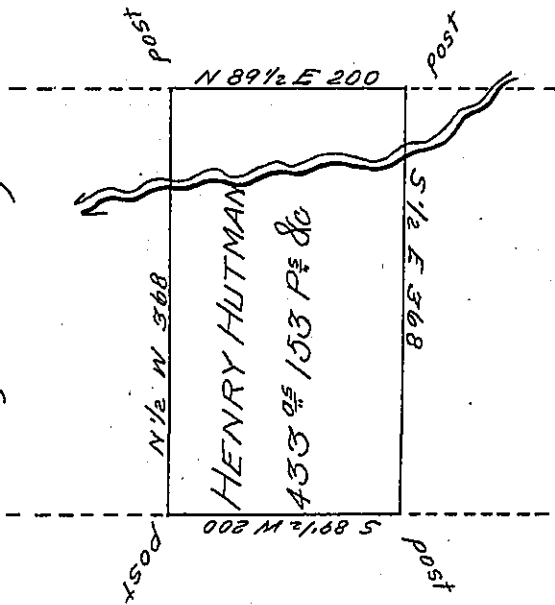


John Emery  
A-87-279

A-16-225

George Ramsey



Francis Hutman

PAGE-276

Vacant

A Draught of a tract of land called Situate in the County of Luzerne,  
 Adjoining Francis Hutman & others, surveyed the 27<sup>th</sup> day of October 1792  
 for Henry Hutman in pursuance of a warrant bearing date the 3<sup>d</sup> day of April  
 1792 Containing Four hundred thirty three Acres & one hundred & Fifty th-  
 ree perch<sup>s</sup> & the allow<sup>e</sup> of Six P Cent &

To Dan<sup>l</sup> Brodhead Esq<sup>r</sup> }  
 Surveyor General

Ant<sup>y</sup> Crothers D.S.

IN TESTIMONY that the above is a copy of the original remaining on file in  
 the Department of Internal Affairs of Pennsylvania, made  
 conformably to an Act of Assembly approved the 16th day of  
 February, 1833, I have hereunto set my Hand and caused  
 the Seal of said Department to be affixed at Harrisburg,  
 this sixth day of June 1905

*Asac R. Brown*  
 Secretary of Internal Affairs.